

4

3

2

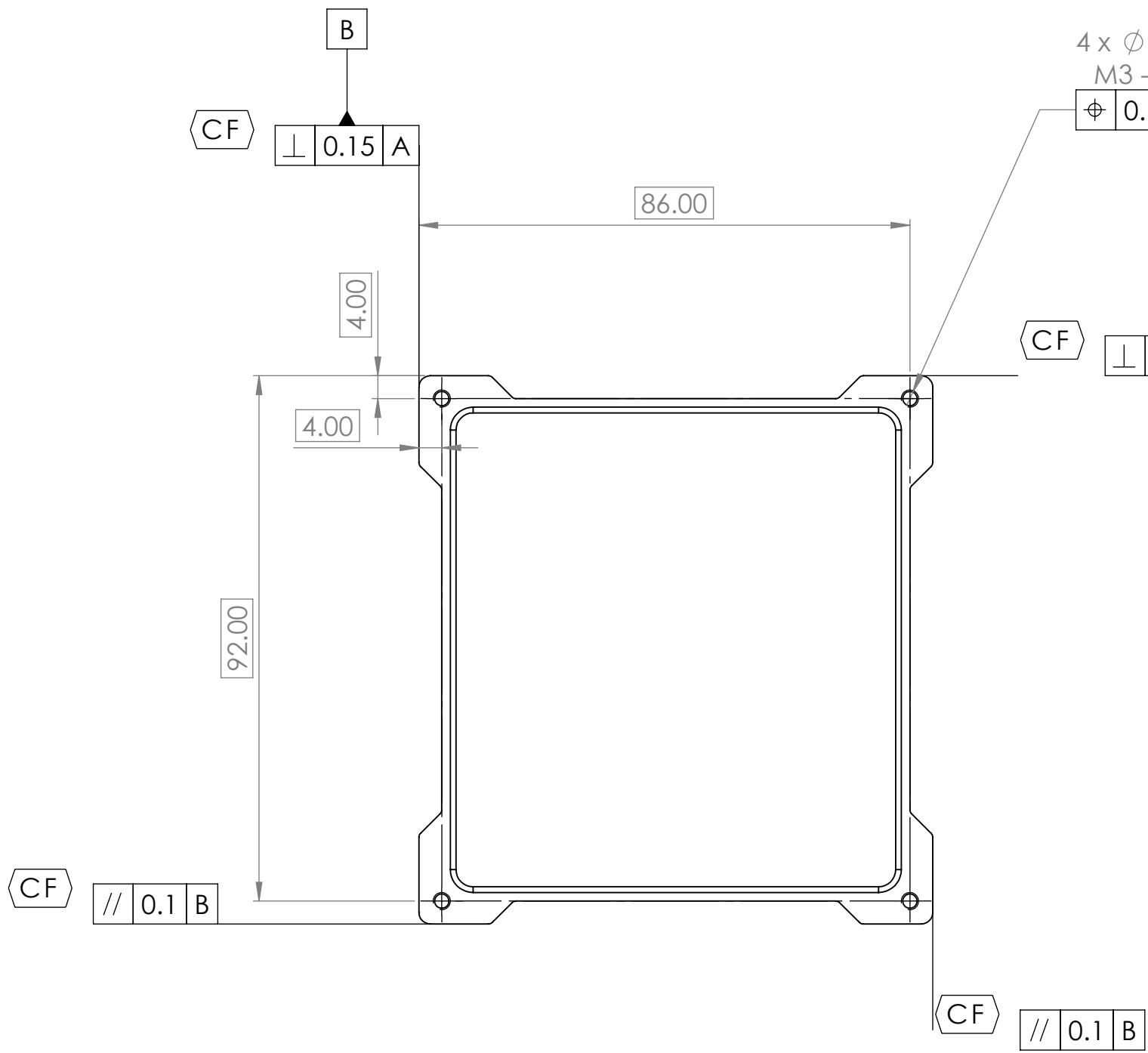
1

B

B

A

A



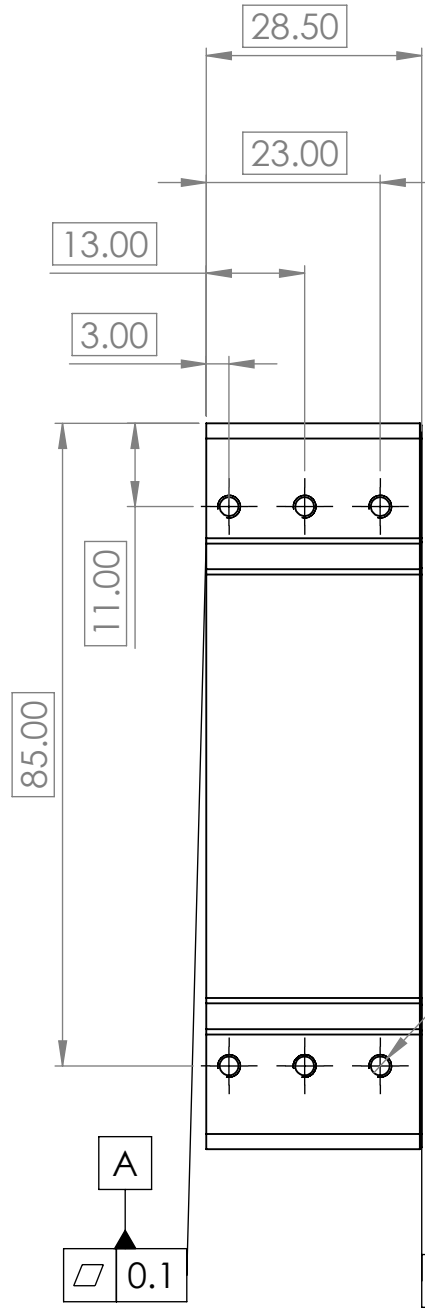
4 x \varnothing 2.50 ∇ 8.50
M3 - 6H ∇ 6.00

\varnothing 0.1 A B C

C
CF \perp 0.15 A B

CF // 0.1 B

CF // 0.1 B

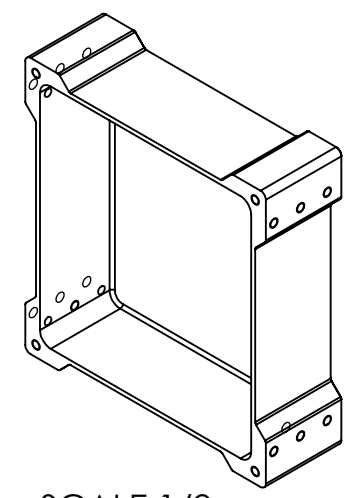


12 x \varnothing 2.50 THRU
M3x0.5 - 6H THRU

\varnothing 0.1 A B C

A
 \parallel 0.1

// 0.2 A



SCALE 1/2



DIMENSIONS ARE IN MILLIMETERS
UOS TOLERANCES:
X +/- 0.25
X.X +/- 0.1
X.XX +/- 0.05
X° +/- 0.5°
INTERPRET GEOMETRIC TOLERANCING PER: ASME Y14.5
MATERIAL: AL 6061 T6
FINISH:
ANODIZE PER MIL-PRF-8625, TYPE II, CLASS 2, COLOR: BLACK
SEAL PER MIL-PRF-8625 WITH DI WATER ONLY
MASK ALL THREADED HOLES PRIOR TO ANODIZE
DIMENSIONS APPLY BEFORE FINISH

NAME	DATE	TITLE:
DRAWN	ENG	05/26
CHECKED		
ENG APPR.		
MFG APPR.		
Q.A.		
COMMENT:		

DEORBITING ENCLOSURE P2

SIZE	DWG. NO.	REV
B		1
SCALE: 1:1	WEIGHT: 100g	SHEET 1 OF 1

4

3

2

1